



GAT MONTHLY MEMBERSHIP PROGRESS REPORT

Results as of: 3/31/2021

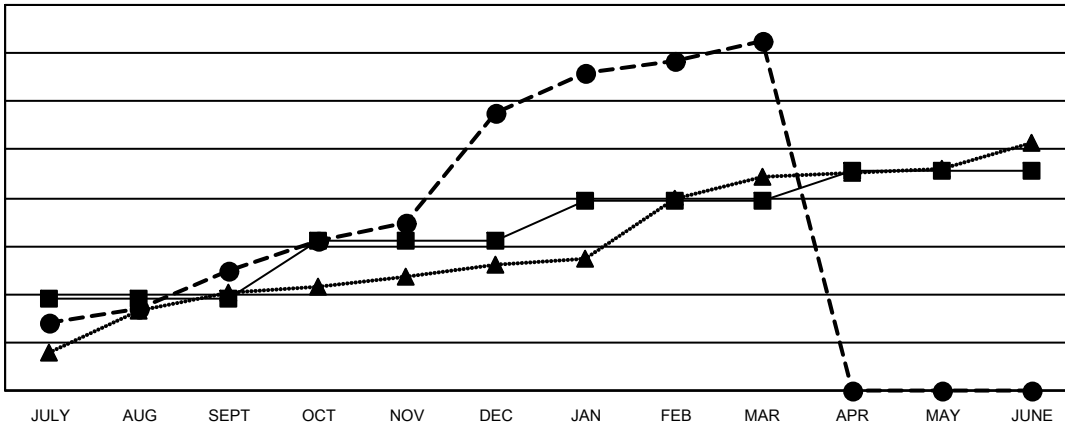
Multiple District 324

LOCATION: INDIA

| Clubs | | | |
|-----------------------|---------------|-----------|---------------|
| RESULTS FOR 2020-2021 | | | |
| QUARTER | NEW CLUB GOAL | NEW CLUBS | DROPPED CLUBS |
| JULY/AUG/SEPT | 38 | 50 | 13 |
| OCT/NOV/DEC | 24 | 65 | 4 |
| JAN/FEB/MAR | 17 | 30 | 75 |
| APR/MAY/JUNE | 12 | 0 | 0 |

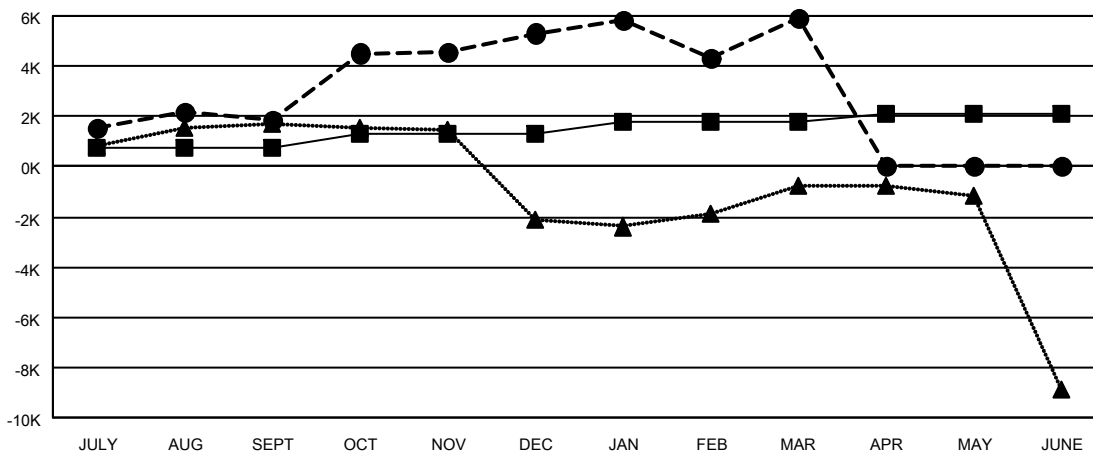
| Members | | | |
|-----------------------|------------------------|----------------------|--|
| RESULTS FOR 2020-2021 | | | |
| QUARTER | MEMBER GROWTH NET GOAL | MEMBER GROWTH ACTUAL | DROPPED MEMBERS ACTUAL (including transfers) |
| JULY/AUG/SEPT | 740 | 5,973 | 2,583 |
| OCT/NOV/DEC | 560 | 7,350 | 2,909 |
| JAN/FEB/MAR | 450 | 3,583 | 2,329 |
| APR/MAY/JUNE | 330 | 0 | 0 |

GOALS AND ACTUAL NEW CLUBS CUMULATIVE



- - CURRENT YEAR GOALS FOR NEW CLUBS
- - CURRENT YEAR ACTUAL NEW CLUBS
- ▲ - LAST YEAR ACTUAL NEW CLUBS

GOALS AND ACTUAL MEMBERS CUMULATIVE



- - MEMBER GROWTH NET GOAL
- - MEMBER GROWTH ACTUAL
- ▲ - LAST YEAR MEMBERSHIP ACTUAL

| | |
|------------------------|--------------|
| DROPPED CLUBS: 92 | |
| <u>DROPPED MEMBERS</u> | |
| DECEASED | 252 |
| CLUB CANCELLED | 1,903 |
| OTHER | 5,666 |
| TOTAL | 7,821 |

1364 CLUBS OF 1730 ADDED 1 OR MORE NEW MEMBERS

| <u>GENDER DISTRIBUTION</u> | |
|----------------------------|-----------------|
| MALE | 52,971 (77.13%) |
| FEMALE | 15,711 (22.87%) |

[CLICK HERE FOR CUMULATIVE MEMBERSHIP DATA](#)

| | |
|---------------------------------|--------|
| TOTAL FAMILY UNIT MEMBERS | 29,084 |
| FAMILY MEMBERS PAYING HALF DUES | 17,995 |